

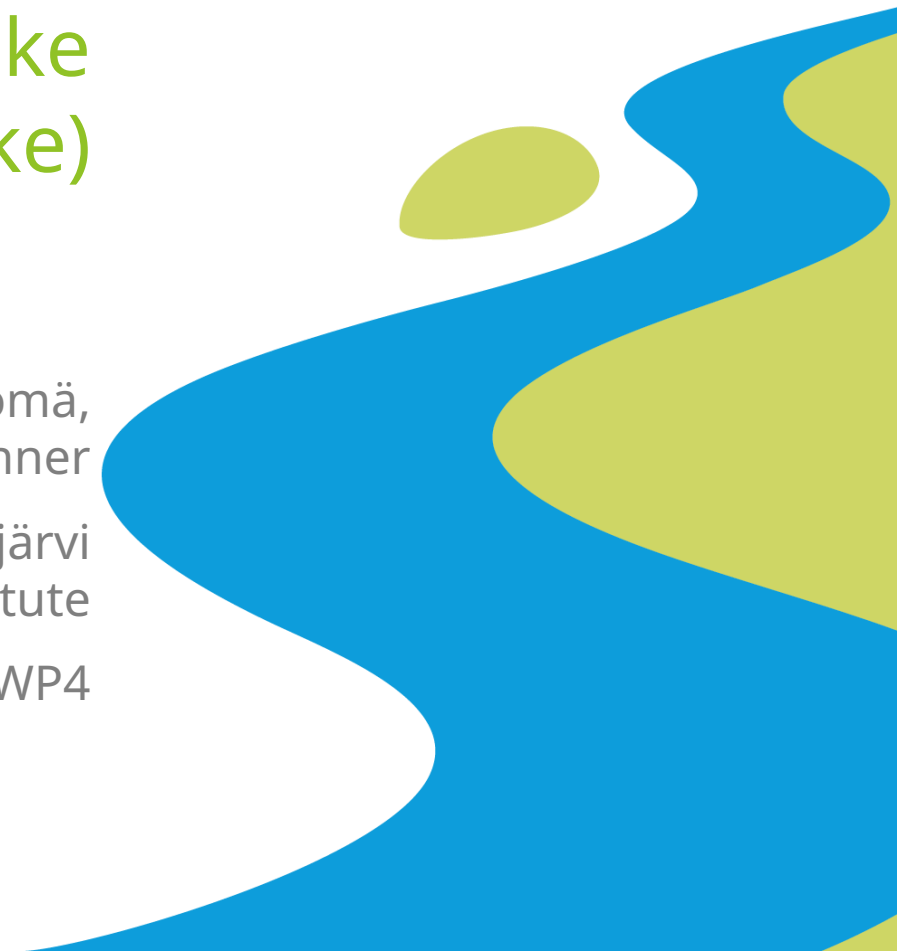
What's up in Lake Köyliönjärvi HOLA LAKE Holistic Approach in Lake Restoration (HoloLake)



Henna Ryömä,
Planner

Pyhäjärvi
Institute

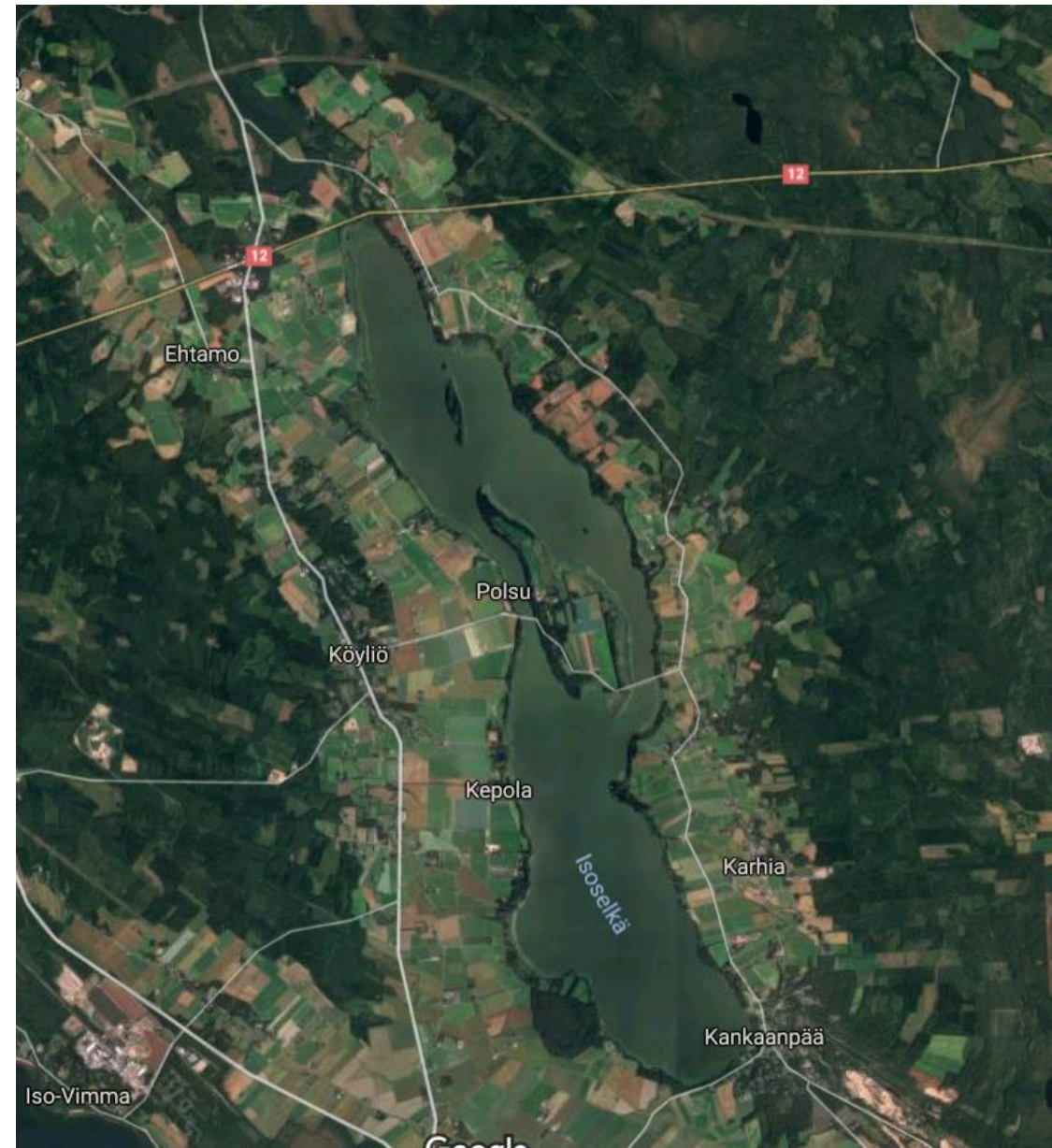
WP4



WP 4

Activities planned in work package 4:

- ▶ Theme events
 - ▶ Reed and vegetation
- ▶ Pilots
 - ▶ Reed cutting pilots, 1-3
- ▶ Voluntary work
 - ▶ Invasive species (cutting of Himalayan balsam)
 - ▶ Reed cutting pilots
- ▶ Instructions
 - ▶ Permits
 - ▶ Guidance to cottage owners and land owners
 - ▶ Costs about reed cutting
 - ▶ How to use reed

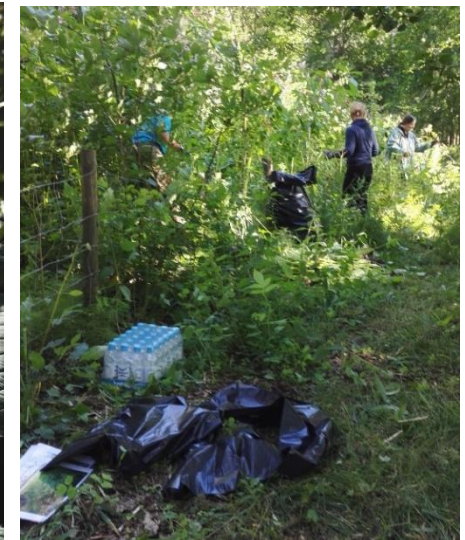
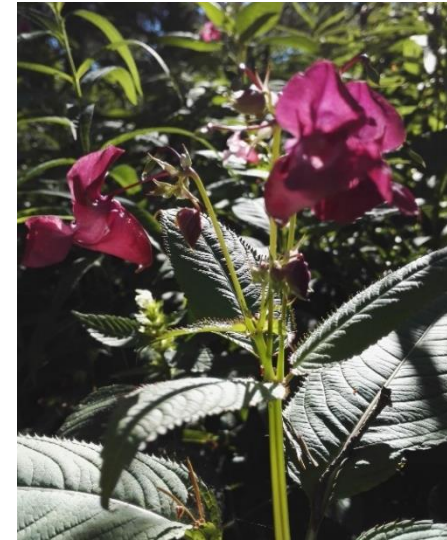




- ▶ About 300 cottage owners around the lake
- ▶ 30-50 m wide reed area in shoreline
- ▶ Harvesting reed is one of main subjects to talk about with cottage owners

Activities of WP4

- ▶ Planned reed cutting pilot in summer 2017, but due to misunderstanding with our contractor pilot cutting was done in summer 2018. (WP4)
- ▶ Voluntary work: cutting of invasive species (Himalayan balsam) 3.8.2017 (WP4)
- ▶ No own research about reed, amount of reed or it's effects to water quality -> all guidance is based on research of other organizations have made. We have also co-operated with Finnish Rural Women's Advisory Organization.



Reed cutting pilot in winter

- ▶ Voluntary work
 - ▶ 12 people
- ▶ Cutting by hand tools
- ▶ Reed was collected to tractor and it was burned near on the field.
- ▶ What are benefits? Less dead reed ashore in spring?
- ▶ No commercial interest of dead reed found in our area.



Theme evening about reed cutting and invasive species (with landscape project)

- ▶ About 30 listeners
- ▶ Presentations about:
 - ▶ Invasive species
 - ▶ Reed cutting
 - ▶ Vegetation in water - benefits and disadvantage
- ▶ Experts from Pyhäjärvi Institute, Rural Women's Advisory Organization and from Allergy, Skin and Asthma Federation.



Mechanical pilot cutting of reed.

- ▶ Conditions: hot day, low waterlevel
- ▶ First try failed because technical problems.
- ▶ About 60 people came to see the pilot.
- ▶ Experts from Rural Women's Advisory Organization about permits and different technics.
- ▶ There is some commercial interest.
- ▶ Investigation about how reed mass will fit as raw material in biogas plant.
- ▶ Transportation costs and costs about cutting reed? Are land owners willing to pay? Are commercial contacts willing to pay? If it's not continuing action – is it still commercially interesting? What is too small area to cut that will interest as commercial product?









Thank you!



Pyhäjärvisseutu



Euroopan maaseudun
kehittämisen maatalousrahasto:
Eurooppa investoi maaseutualueisiin